



Powered By:

GenX 3.6R
Ultra High Frequency Generator

Approved By:

AERB, BIS

A Comprehensive Surgical Imaging Experience



Happier Living Everyday



Follow us on



www.bplmedicaltechnologies.com

Intuitive & User friendly Touch Control Panel



Fluoroscopy

Fluoroscopy Controls with Manual & Auto selection of KV, mA. Multiple operating modes for different applications

Real-Time Heat Monitoring

The Technician can view the monoblock thermal Status in Real-Time

Real-Time Magnification

Option to Control the Image Size through multiple size Zoom Options

Radiography

Radiography Controls with Manual selection of KV & mAs, Anatomical Programming

Experience the World Class 1K x 1K Surgical Imaging



The Holistic 1K x 1K Digital Imaging Chain

BPL C Ray Pro plus is Powered by X-MED 1K² Digital Imaging Chain which ensures that the quality of the image is enhanced at every step, thus providing you an holistic Surgical Imaging experience

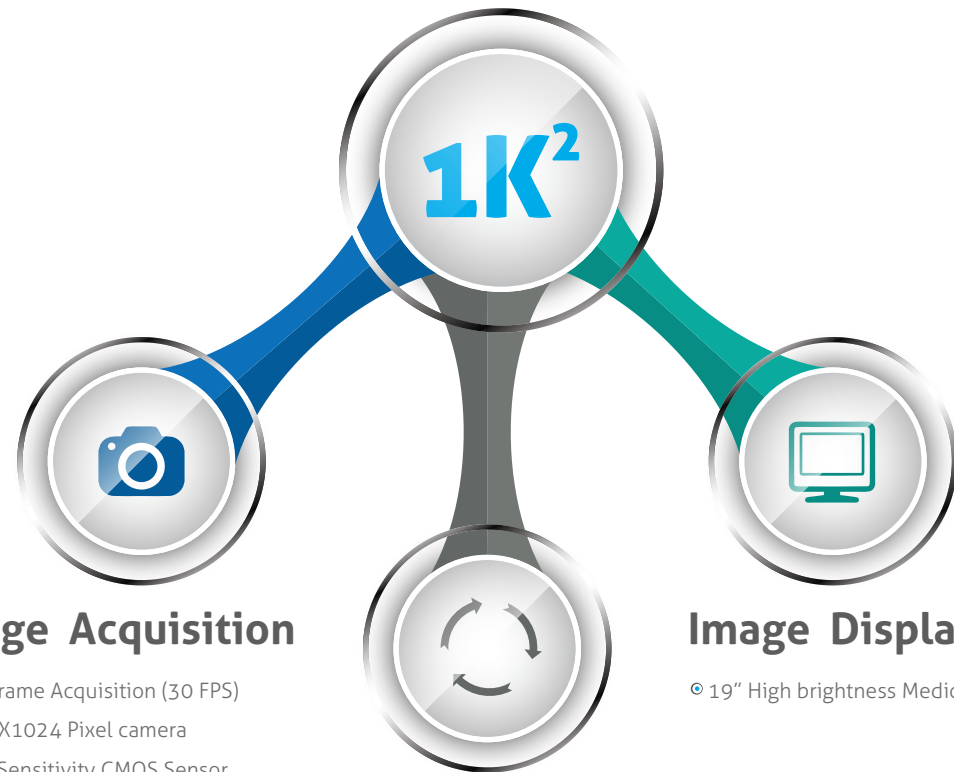


Image Acquisition

- Full Frame Acquisition (30 FPS)
- 1024X1024 Pixel camera
- High Sensitivity CMOS Sensor
- Progressive Scan
- GigE Output

Image Display

- 19" High brightness Medical Grade monitor

Image Processing

- Digital gain control
- Real Time Noise Reduction by Temporal Averaging
- High Resolution Digital Image Output
- Preset: As per anatomy/ procedures

Superior Ergonomic Design for Effortless Operations



Powered By:

GenX 3.6R
Ultra High Frequency Generator



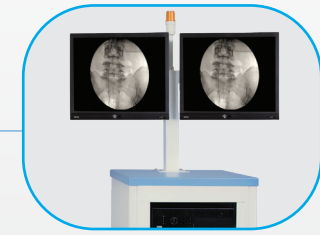
Effortless locking mechanism.
Actuator assisted silent Up / Down movement



X-Ray Exposure Switch for
Fluoroscopy & Radiography



Foot Switch with a Holding Case
for easy Equipment transport



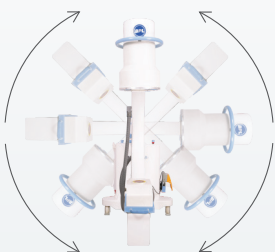
Compact Workstation with dual
High Resolution monitors



Efficient Steering mechanism
with 90° rear wheel rotation.



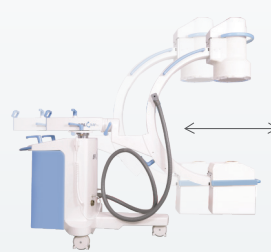
Durable Wheels with foot lock



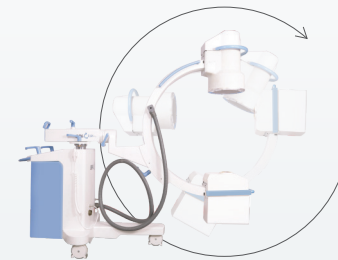
±180° Axial Rotation



±12.5° Wig Wag Movement



200 mm Horizontal Movement



90° + 35° Orbital Rotation



400 mm Vertical Movement

Technical Specifications

X-Ray Generator

| | |
|-----------------------------|-------------------------|
| Type | High Frequency; 110 kHz |
| Output | 3.6 kW |
| KV Range | |
| (Fluoroscopy / Radiography) | 40 - 110 kV |
| Fluoroscopy mA | 0.1 - 3 mA |
| Boost Mode mA | Upto 7.5 mA |
| Radiology mAs | 1-200 mAs |

X-Ray Tube

| | |
|--------------------------|-------------------------|
| Type | Stationary Anode |
| Focal Spot Nominal Value | 0.6/1.5 mm ² |
| (Small / Large) | |

Control Panel

| | |
|--------------|---|
| Display Type | 7" Touch, Colored Graphical Display |
| Operating | Continuous Fluoroscopy Mode Boost Fluoroscopy Mode Snapshot Mode Auto Mode |

Image Intensifier

| | |
|------|---|
| Type | 9" Triple Field (9"/6"/4.5") |
| Grid | Round, 9" - 10:1, 103 Lines, FD : 36-39" |

Camera

| | |
|------|--|
| Type | 1/2.9" CMOS sensor, 1024X1024 pixels, GigE output |
|------|--|

Workstation

| | |
|------------------------|--------------------------------------|
| Display : LED Monitors | 19" Monochrome medical grade display |
|------------------------|--------------------------------------|

Image Memory

| | |
|-----------------------|--|
| X-MED 1K ² | PC base advanced image memory with real-time & post-processing features; storage upto 2,00,000 images. |
| Data Export | DICOM Send, CD/DVD, USB |

Mechanical Characteristics

| | |
|--|---------------------|
| C-Arm Dimension | |
| Vertical Run | 400 mm |
| Horizontal Run | 200 mm |
| Wig-Wag (Swivel Range) | ± 12.5° |
| Angulation | ± 180° |
| Orbital Movement (Over scan) | 125° (-35° to +90°) |
| S.ID | 960 mm |
| Arc Depth | 630 mm |
| Clearance (Free space between II and Tubehead) | 760 mm |

Electrical Characteristics

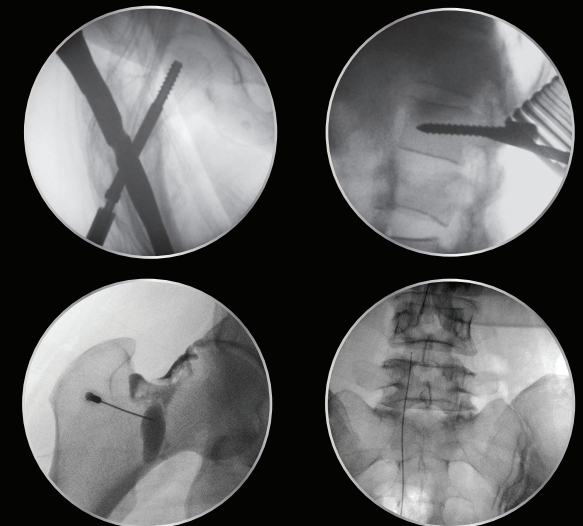
| | |
|----------------------|------------------------|
| Single phase voltage | 230 V AC (±10%), 50 Hz |
|----------------------|------------------------|

Other Functions

| |
|---|
| Foot Switch |
| Automatic Shut Off to prevent over-heating of the Equipment |
| Emergency stop switch |
| Equipment Malfunction Indication (Self diagnostics) |
| Servo Stabilizer to manage Voltage Fluctuations (Optional) |
| Complete Shielded wiring and EMI Protection |



Wide Clinical Applications



ISO 13485:2016 CERTIFIED COMPANY
ISO 9001:2015 CERTIFIED COMPANY

BPL MEDICAL TECHNOLOGIES PRIVATE LIMITED

Registered office: 11th KM, Bannerghatta Road,
 Arakere, Bangalore - 560076, India
 Phone +91 80 26484388/ 2648 4350
 Toll Free 1800-425-2355
 Website www.bplmedicaltechnologies.com
 CIN:U33110KA20212PTC067282
 For Enquiries: sales.medical@bpl.in



Happier Living Everyday